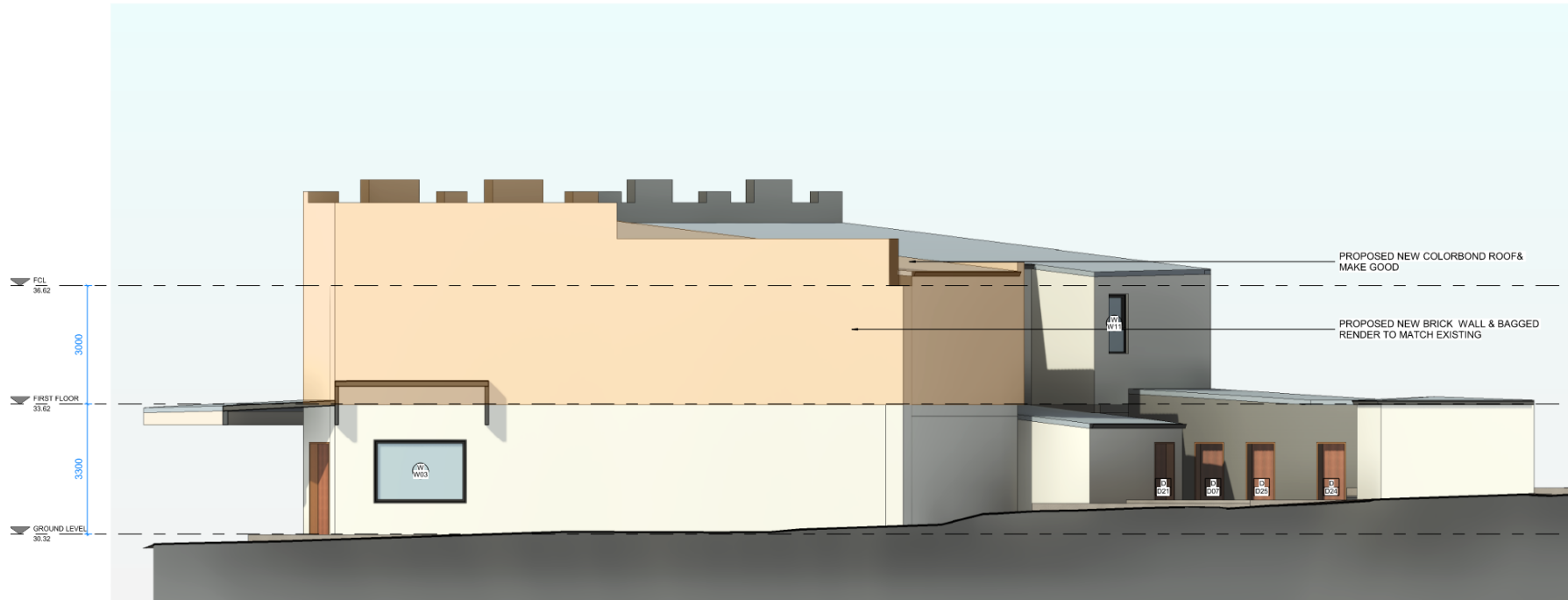




SITE PLAN
1:200



1 PROPOSED EAST ELEVATION
1:50



1 PROPOSED NORTH ELEVATION
1:50

REVISION SCHEDULE

ISSUE DESCRIPTION
A DA PROPOSAL

ISSUED BY DATE
ST 10-01-2024



Member
Australian
Institute of
Architects

0m 4m 8m 12m 16m 20m
VISUAL SCALE 1:200 @ A1

DISCLAIMER:
CONCEPTS AND INFORMATION CONTAINED IN THIS DRAWING ARE COPYRIGHT AND MAY NOT BE REPRODUCED IN WHOLE OR PART OR BY
ANY MEDIUM WITHOUT THE WRITTEN PERMISSION OF JS ARCHITECTS PTY LTD. DO NOT SCALE THIS DRAWING. USE FIGURED
DIMENSIONS ONLY. VERIFY ALL PROJECT DIMENSIONS BEFORE COMMENCING ON-SITE WORK OR OFF-SITE FABRICATION. NOTIFY JS
ARCHITECTS PTY LTD OF ANY DISCREPANCIES AND SEEK INSTRUCTIONS

CONSULTANTS

PM

NORTH POINT



THIS DRAWING ISSUE
HAS BEEN REVIEWED
BY

DIRECTOR - SO

CLIENT

TONY SEEMAN

DRAWING TITLE
SITE PLAN

DATE
10-01-2024

SCALE @ A1
As indicated

PROJECT NUMBER
039 / 23-24

DRAWING No.
A101

ISSUE
A

PROJECT

PROPOSED ALTERATION AND
ADDITION
77 - 83 CANTERBURY ROAD,
CANTERBURY

JS Architects Pty Ltd

Suite 4.04, Level 4, No. 5 Celebration Drive
BELLA VISTA ~ NSW 2153 Australia

T : 61 2 8814-6991 FAX: 61 2 8814-6992

M : 61 412 06 06 04

E : info@jsarchitects.com.au

W : www.jsarchitects.com.au

ABN 70 119 946 575

Nominated Architect: Stymon Ochudzawa (RAIA 6866)

